

SharePoint Configuration

Before using the check in/check out features in Foxit PDF Editor, please configure the SharePoint Server.

1. Click [here](#) to download PDF icon.
2. **SharePoint 2007:** Copy the downloaded.GIF file to "Drive:\Program Files\Common Files\Microsoft Shared\Web Server Extensions\12\Template\Images".

SharePoint 2010: Copy the downloaded.GIF file to "Drive:\Program Files\Common Files\Microsoft Shared\Web Server Extensions\14\Template\Images".

SharePoint 2013: Copy the downloaded.GIF file to "Drive:\Program Files\Common Files\Microsoft Shared\Web Server Extensions\15\Template\Images".

SharePoint 2016: Copy the downloaded.GIF file to "Drive:\Program Files\Common Files\Microsoft Shared\Web Server Extensions\16\Template\Images".

3. **SharePoint 2007:** Edit the file "Drive:\Program Files\Common Files\Microsoft Shared\Web server extensions\12\Template\Xml\DOCICON.XML".

SharePoint 2010: Edit the file "Drive:\Program Files\Common Files\Microsoft Shared\Web server extensions\14\Template\Xml\DOCICON.XML".

SharePoint 2013: Edit the file "Drive:\Program Files\Common Files\Microsoft Shared\Web server extensions\15\Template\Xml\DOCICON.XML".

SharePoint 2016: Edit the file "Drive:\Program Files\Common Files\Microsoft Shared\Web server extensions\16\Template\Xml\DOCICON.XML".

To edit the file, please refer to the following steps:

- a. Right-click DOCICON.XML file > click Open With > select Notepad.
- b. Add an entry for the file with .pdf extension and take it as the file's name. For example, type the ICPDF as the name of the .gif file:

```
<Mapping Key="pdf" Value="pdficon.gif"
```

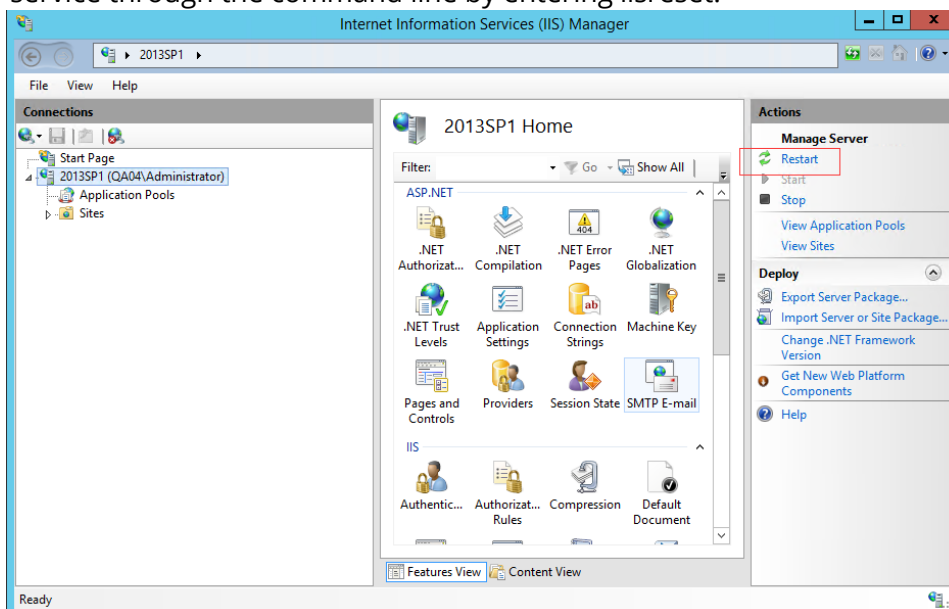
```
OpenControl="FoxitPhantomPDF.OpenDocuments" EditText="Foxit  
PhantomPDF" OpenApp="FoxitPhantomPDF />
```

```

DOCICON - Notepad
File Edit Format View Help
<?xml version="1.0" encoding="utf-8"?>
<DocIcons>
  <ByProgID>
    <Mapping Key="Excel.Sheet" value="ichtmx1s.gif" EditText="Microsoft Excel" OpenControl="SharePoint.OpenDocuments"/>
    <Mapping Key="FrontPage.Editor.Document" value="ichtmpf.gif" EditText="Microsoft SharePoint Designer" OpenControl="SharePoint.OpenDocuments"/>
    <Mapping Key="InfoPath.Document" value="icxddoc.gif" EditText="Microsoft InfoPath" OpenControl="SharePoint.OpenXMLDocuments"/>
    <Mapping Key="InfoPath.Document.2" value="icxddoc.gif" EditText="Microsoft InfoPath" OpenControl="SharePoint.OpenXMLDocuments"/>
    <Mapping Key="InfoPath.Document.3" value="icxddoc.gif" EditText="Microsoft InfoPath" OpenControl="SharePoint.OpenXMLDocuments"/>
    <Mapping Key="InfoPath.Document.4" value="icxddoc.gif" EditText="Microsoft InfoPath" OpenControl="SharePoint.OpenXMLDocuments"/>
    <Mapping Key="ODC.Cube" value="icodcc.gif" EditText="Microsoft Excel" OpenControl="SharePoint.OpenDocuments"/>
    <Mapping Key="ODC.Database" value="icodcd.gif" EditText="Microsoft Excel" OpenControl="SharePoint.OpenDocuments"/>
    <Mapping Key="ODC.Table" value="icodct.gif" EditText="Microsoft Excel" OpenControl="SharePoint.OpenDocuments"/>
    <Mapping Key="onenote.Notebook" value="icnotebk.png" EditText="Microsoft OneNote" OpenControl="SharePoint.OpenDocuments"/>
    <Mapping Key="PowerPoint.Slide" value="ichtmppt.gif" EditText="Microsoft PowerPoint" OpenControl="SharePoint.OpenDocuments"/>
    <Mapping Key="Publisher.Document" value="ichtmpub.gif" EditText="Microsoft Publisher" OpenControl="SharePoint.OpenDocuments"/>
    <Mapping Key="SharePoint.DocumentSet" value="icdocset.gif"/>
    <Mapping Key="SharePoint.webPartPage.Document" value="icsmrtpg.gif" EditText="Microsoft SharePoint Designer" OpenControl="SharePoint.OpenDocuments"/>
    <Mapping Key="Visio.WebDrawing" value="icvdw.gif" EditText="Microsoft Visio" OpenControl="SharePoint.OpenDocuments"/>
    <Mapping Key="Word.Document" value="ichtmdoc.gif" EditText="Microsoft Word" OpenControl="SharePoint.OpenDocuments"/>
    <Mapping Key="XDocs.Document" value="icxddoc.gif" EditText="Microsoft InfoPath" OpenControl="SharePoint.OpenXMLDocuments"/>
    <Mapping Key="SharePoint.Link" value="DOCLINK.GIF"/>
    <Mapping Key="SharePoint.SearchAdminReport" value="icsadrep.gif" EditText="Microsoft SharePoint Designer" OpenControl="SharePoint.OpenDocuments"/>
  </ByProgID>
  <ByExtension>
    <Mapping Key="pdf" value="pdficon.gif" OpenControl="FoxitPhantomPDF.OpenDocuments" EditText="Foxit PhantomPDF" OpenApp="Foxit PhantomPDF"/>
    <Mapping Key="accdb" value="icacddb.gif" EditText="Microsoft Access" OpenControl="SharePoint.OpenDocuments"/>
    <Mapping Key="accdt" value="icacddb.gif"/>
    <Mapping Key="accdc" value="icacddb.gif"/>
    <Mapping Key="accde" value="icacdde.gif" EditText="Microsoft Access" OpenControl="SharePoint.OpenDocuments"/>
    <Mapping Key="accdr" value="icacdde.gif" EditText="Microsoft Access" OpenControl="SharePoint.OpenDocuments"/>
    <Mapping Key="asax" value="icasax.gif" OpenControl=""/>
    <Mapping Key="ascx" value="icascx.gif" EditText="Microsoft SharePoint Designer" OpenControl="SharePoint.OpenDocuments"/>
    <Mapping Key="asmx" value="icasmx.gif" OpenControl=""/>
    <Mapping Key="asp" value="ichtm.gif" OpenControl=""/>
    <Mapping Key="aspx" value="ichtm.gif" EditText="Microsoft SharePoint Designer" OpenControl="SharePoint.OpenDocuments"/>
    <Mapping Key="bmp" value="icbmp.gif"/>
    <Mapping Key="cat" value="iccat.gif" OpenControl=""/>
    <Mapping Key="chm" value="icchm.gif" OpenControl=""/>
    <Mapping Key="config" value="icconfig.gif" OpenControl=""/>
    <Mapping Key="css" value="iccss.gif" OpenControl=""/>
    <Mapping Key="db" value="icdb.gif" OpenControl=""/>
    <Mapping Key="dib" value="icdib.gif"/>
    <Mapping Key="disc" value="icdisc.gif" OpenControl=""/>
    <Mapping Key="doc" value="icdoc.png" EditText="Microsoft Word" OpenControl="SharePoint.OpenDocuments"/>
    <Mapping Key="docm" value="icdocm.png" EditText="Microsoft Word" OpenControl="SharePoint.OpenDocuments"/>
    <Mapping Key="docx" value="icdocx.png" EditText="Microsoft Word" OpenControl="SharePoint.OpenDocuments"/>
    <Mapping Key="dot" value="icdot.png" EditText="Microsoft Word" OpenControl="SharePoint.OpenDocuments"/>
    <Mapping Key="dotm" value="icdotm.png" EditText="Microsoft Word" OpenControl="SharePoint.OpenDocuments"/>
    <Mapping Key="dvd" value="icdvd.gif" OpenControl=""/>
  </ByExtension>
</DocIcons>

```

- c. Click Save on the File menu, and then quit Notepad.
4. Navigate to the IIS server (Internet Information Services Manager) under Windows Administrative Tools. Open the service and click **Restart** in the right panel of the **Internet Information Services (IIS) Manager** window to restart it. Alternatively, you can restart the service through the command line by entering iisreset.

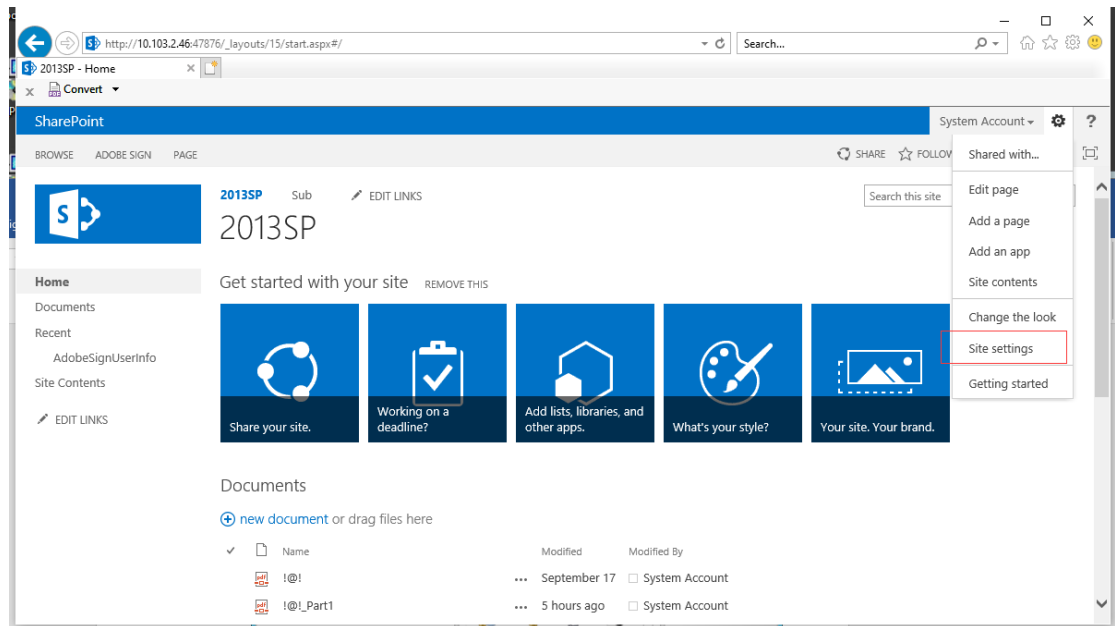


After the restart, reopen your IE browser.

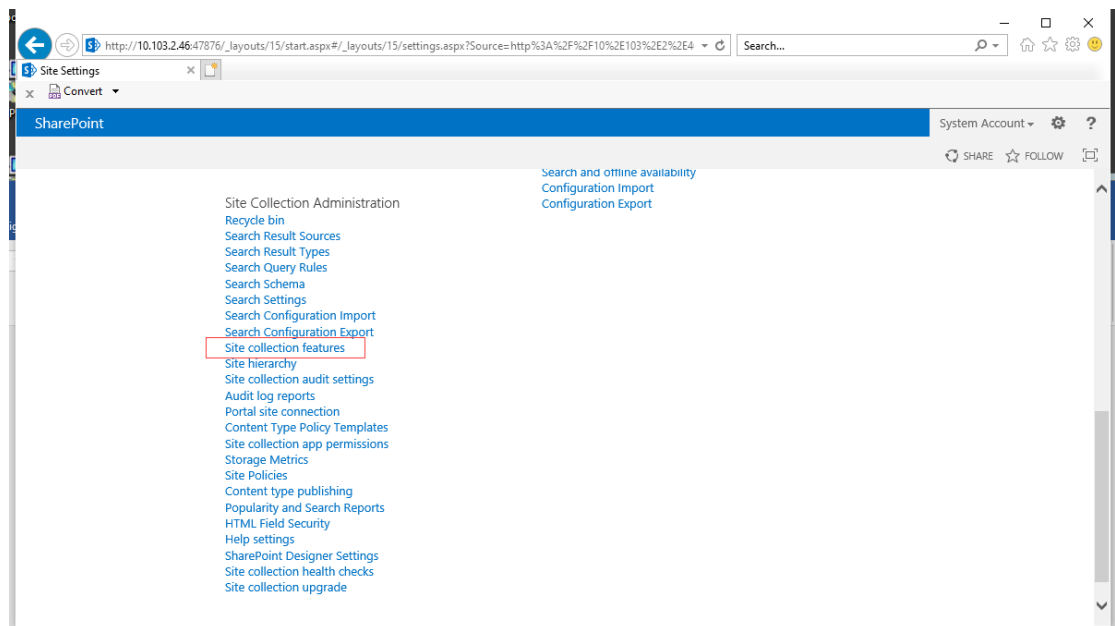
For **SharePoint 2007** and **2010**, when you click on the file in your SharePoint repository on the IE browser, the document will be directly checked out and opened in Foxit PDF Editor.

For **SharePoint 2013** and **2016**, additional configuration is required. Please do the following steps to complete. (Take **SharePoint 2013** for example)

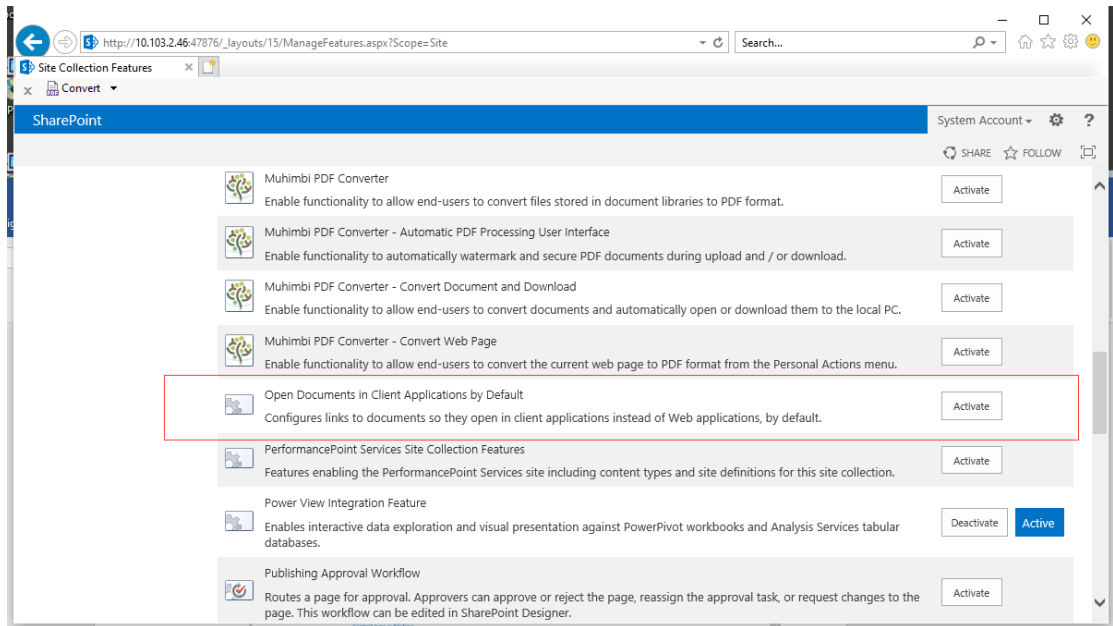
- a. Enter the URL address of the SharePoint server on the IE browser and open **Site settings**.



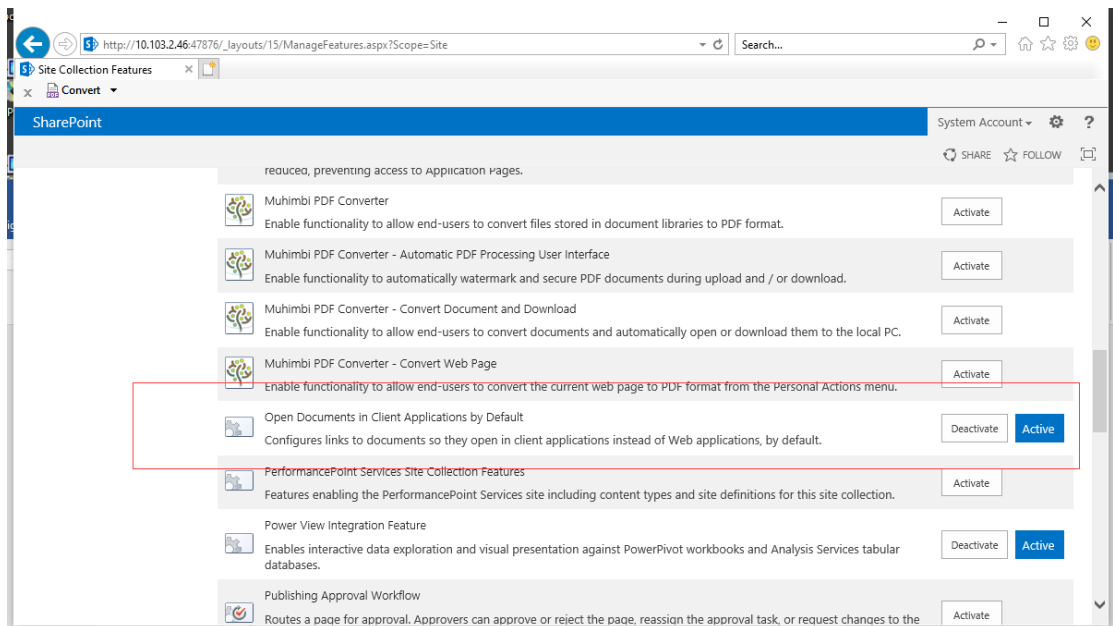
- b. On the **Site settings** page, navigate to **Site collection administration** and choose **Site collection features**.



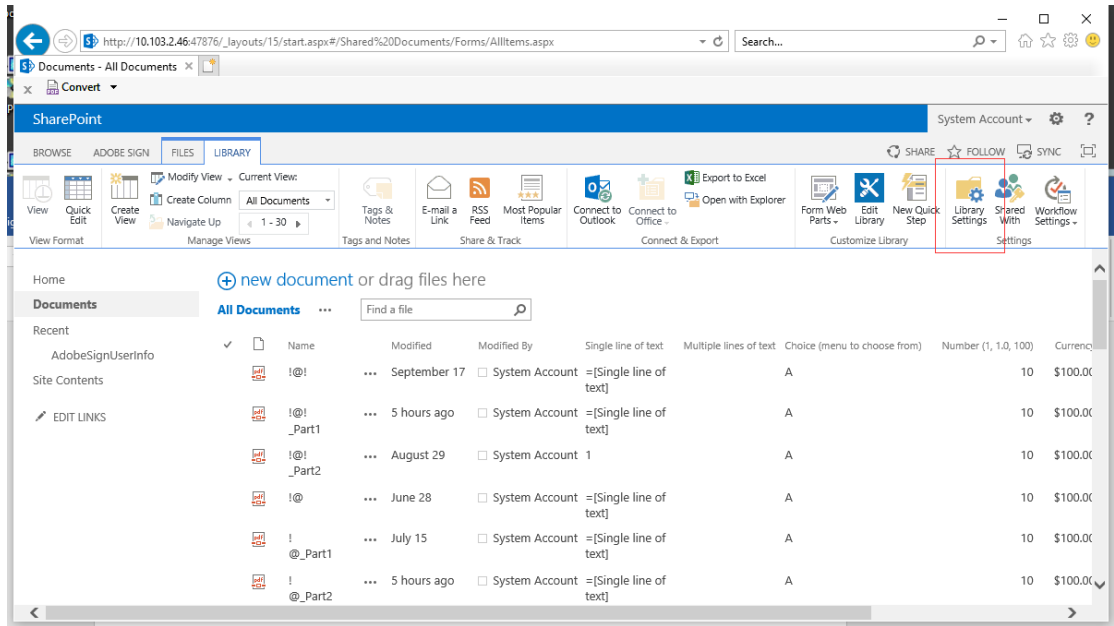
- c. On the **Site Collection Features** page, find **Open Documents in Client Application by Default** and click **Activate**.



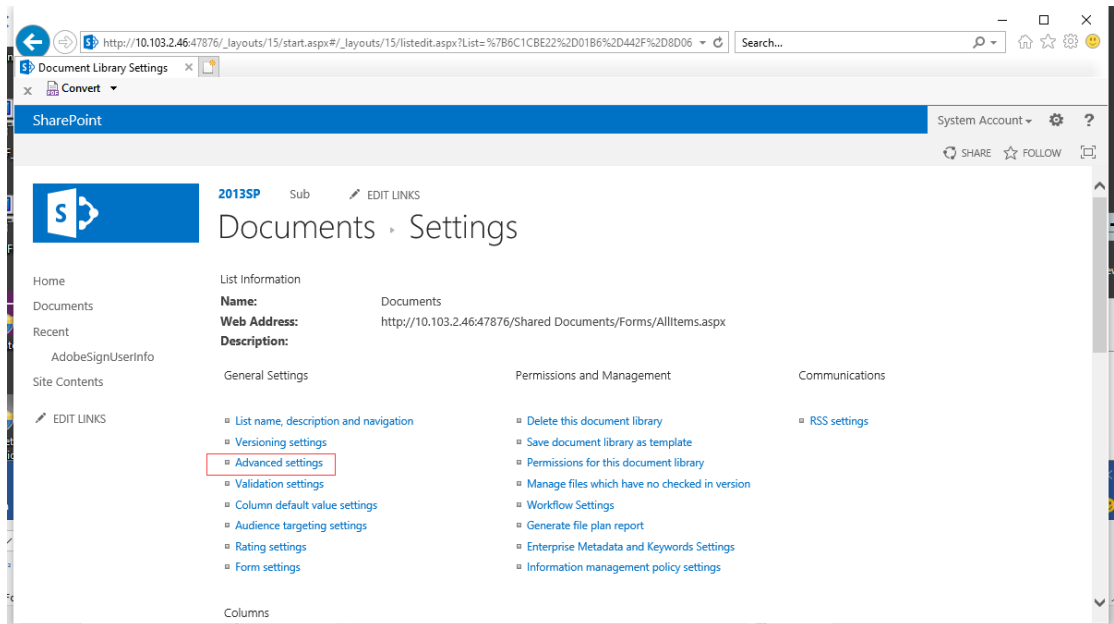
After activation, the interface is shown as below:



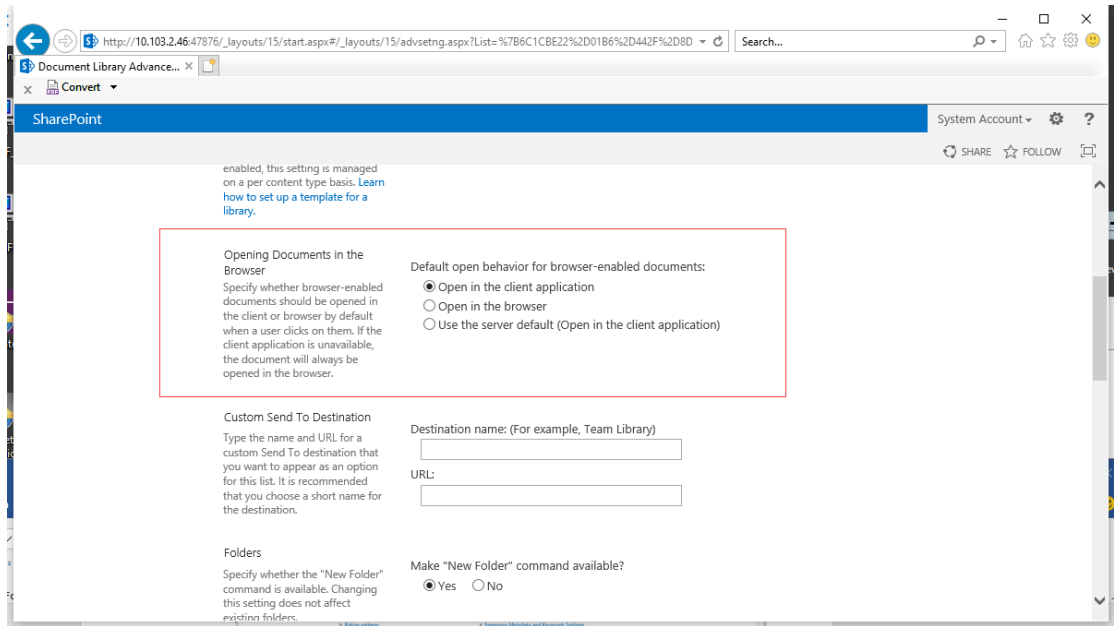
- d. Open the document library in SharePoint and select **Library Settings**.



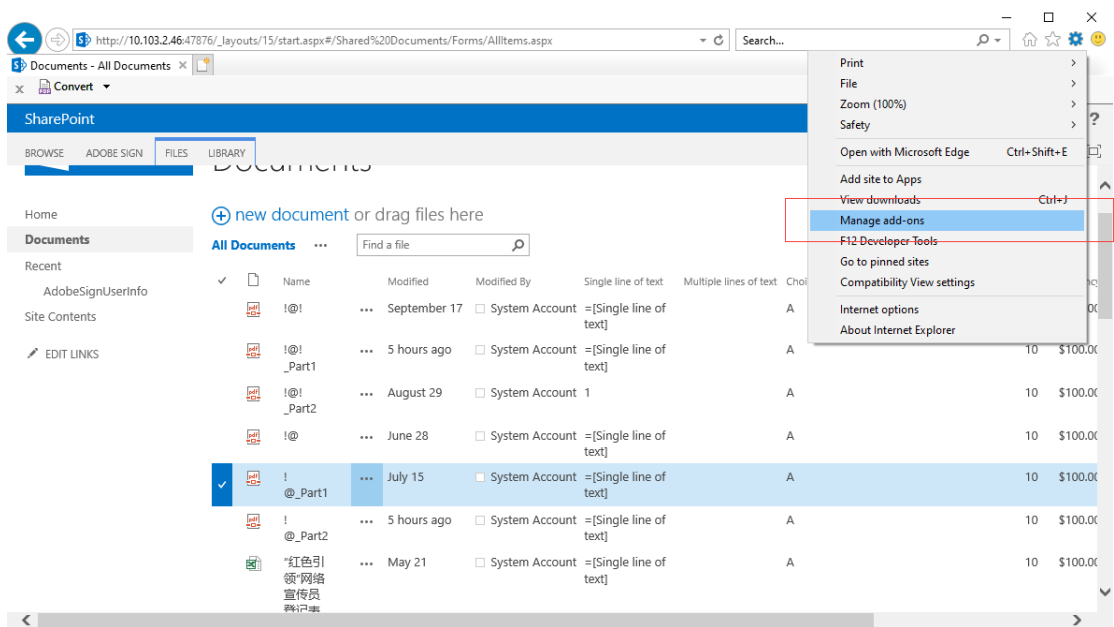
Then choose **Advanced settings** under the **General Settings** item.



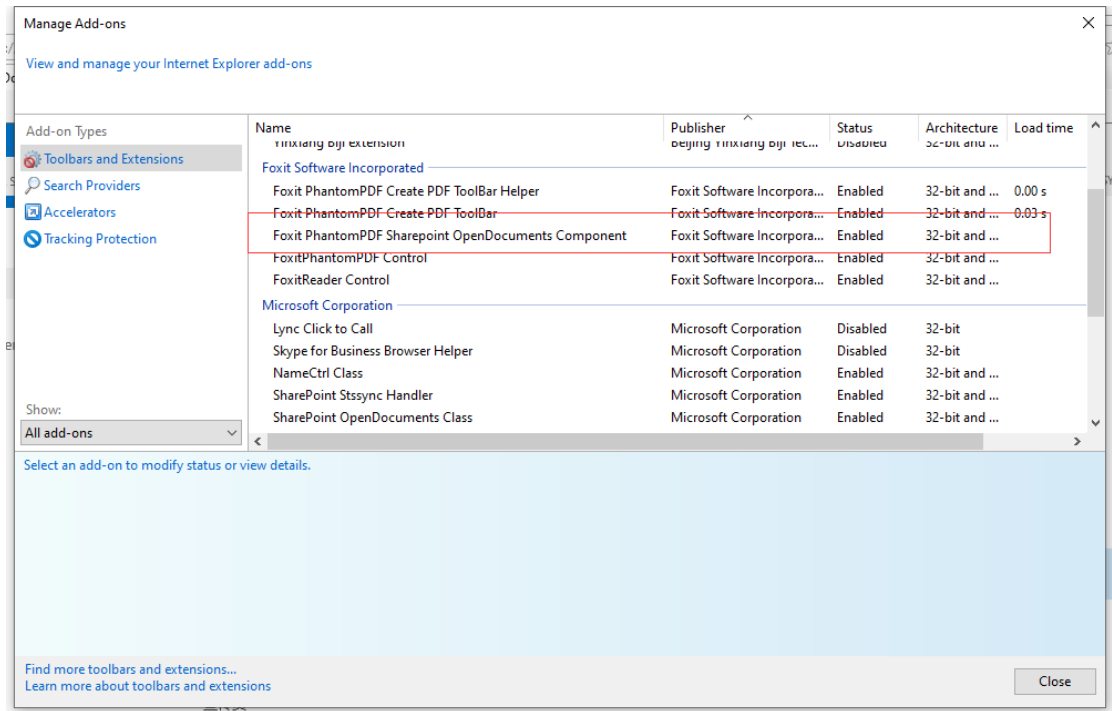
- e. Make sure that the **Open in the client application** option is checked in the **Opening Documents in the Browser** item.



- f. Click the Settings icon in the upper-right corner of the IE browser, and choose **Manage add-ons**.

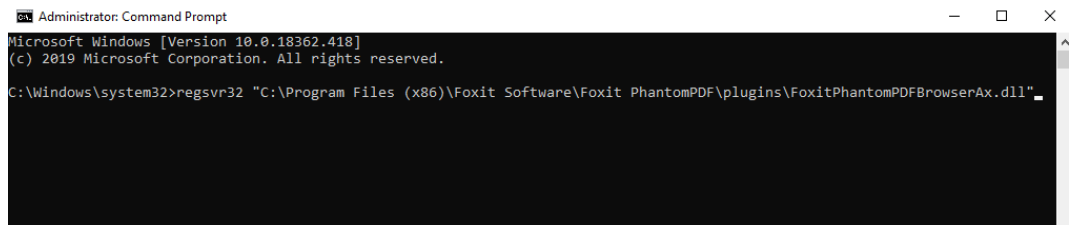


- g. Select **All add-ons** and make sure that **Foxit PhantomPDF SharePoint OpenDocuments Component** is enabled.

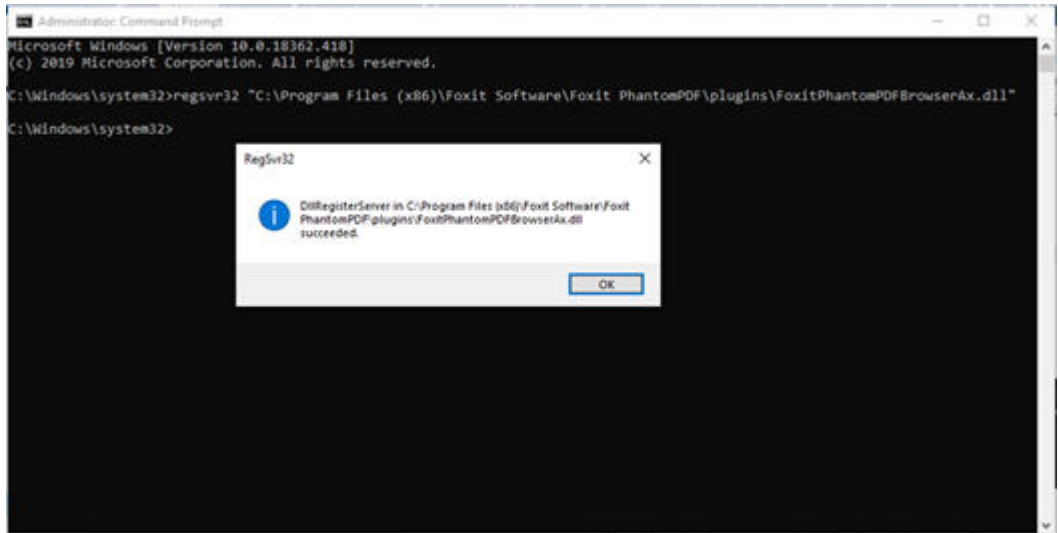


In addition, note that it is required for users of PhantomPDF 9.7 to register FoxitPhantomPDFBrowserAx.dll manually as follows:

- 1) Run Command Prompt as administrator and run the command: `regsvr32 "full path to FoxitPhantomPDFBrowserAx.dll"`. (Tip: By default, *FoxitPhantomPDFBrowserAx.dll* is in "C:\Program Files (x86)\Foxit Software\Foxit PhantomPDF\plugins".)



- 2) If the registration is successful, a message box pops up.



3) Reopen the IE browser.

Note: When you open a document (whether by clicking the document or through the Open command in the context menu after right-clicking it) in your SharePoint repository on the IE browser the first time, select **Allow** in the prompted dialog box asking you whether to run FoxitPhantomPDFOCX ActiveX Control Module or PhantomPDF.

